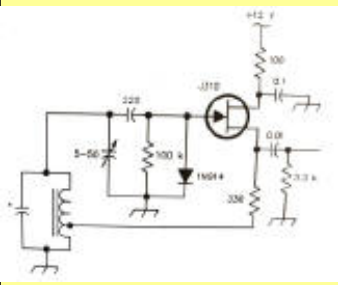
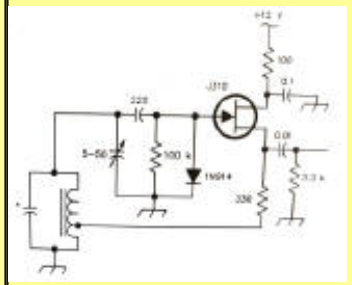


Local Oscillator



2008

Mesilla Valley Radio Club



September

A [pdf file](#) of this issue is available. It should print fairly easily. If you do not have the free pdf file reader, go to <http://www.adobe.com>

Coming Events

Table of Contents

Date	Event	Time
Sun	CW Net 7.142	4:00PM
M - F	6 m FM net 52.540	6:00AM
M - F	round-table 52.525	8:00PM
T, T	Informal Wal-Mart (E)	10:00AM
M, W, F	Informal Wal-Mart (W)	10:00AM
Mon	WTRA Swap net 146.88	8 PM
Wed	Net 146.64	6:45PM
Sept 6	Breakfast - Club House	8 AM
Sept 6	Business meet - Club House	9 AM
Sept 13	VE Test	
Sept 6, 7	Horse Race	
Sept 27	Whole Enchilada Race	
Nov 8	VE Test	

COMING EVENTS
 TABLE OF CONTENTS
[HORSE RACE](#)
[WHOLE ENCHILADA RACE](#)
[BACK PAGE](#)



W5FHA, SCM, at Bean Feed

More information at <http://swantenna.com>

Southwest Antennas & Accessories

<http://swantenna.com>

The space below is used for acknowledgements and maintaining the site.
Send comments, suggestions, and requests to [Alex. F. Burr](mailto:aburr@qzxservices.com) or send e-mail to aburr@qzxservices.com.
Technical assistance, net access, design, and maintenance provided by qzxservices.com

THE ARTICLES FOR THIS MONTH

HORSE RACE

KD5OHA

On September 6&7 at the fair grounds west of Las Cruces there is going to be an endurance horse race called The Desert Classic. This is an international qualifying event for the World Championship Race. Our race on Saturday starts at 0400 A.M. There will be 100, 75, 50, and 25 mile races on this day. There is a 25 mile, 15 mile, and 10 mile course. Completing each of these once equals 50 miles. Then the second time gives 100 miles. There are mandatory Vet Holds between all the circuits. Participants have 24 hours to complete the 100 miles, 18 hours to complete the 75 miles, 12 hours to complete 50 miles, and 6 hours to complete 25 miles. Sunday's race will be a 50 mile and 25 mile race and will start at 06:30 A.M. Radio operators will be at different locations along the course where the circuits cross. From the past I have learned the best coverage is from mobile radios in your vehicle that can provide 10 watts or more power due to the terrain and distances handhelds do not work that well. If you have pushup antennas bring them. We will be using 146.55 simplex for the 2 meter frequency. I will be Net Control, KD5OHA. I will be coordinating with KD5DLI, Roger Taylor, a Vet from Albuquerque. I will need lots of help due to the length of the event and the fact it is two days long.

[Return to Table of Contents](#)

WHOLE ENCHILADA RACE

KD5OHA

In addition to the up coming horse race on September 27, the Mesilla Valley Track Club will produce the Whole Enchilada Fiesta 5K/1-Mile foot race. I will need radio operators to help cover this race. I will have more details closer to the race.

[Return to Table of Contents](#)

CLUB INFORMATION

The MVRC Clubhouse is located at the intersection of Wilt and Jefferson in Hacienda Heights. To find the clubhouse, set your destination on your GPS receiver as 32 degrees 22.961 minutes and -106 degrees 41.44 minutes. If you don't own a gps, take the Porter exit on US 70. It is about 5 miles from the I 25 interchange, near the firehouse. Almost immediately south of the south frontage road on the south side of US 70, turn left toward the mountains until you come to Wilt. Turn right. There is a jog in the road, but at 0.35 miles you should come to Jefferson. If you can't see the tower and beam, you shouldn't be driving. The treasurer would be delighted to receive your contribution for landscaping and furnishing.



Officers

Office	Name	Call	Phone	e-mail
President	Tres Campbell	KD5HZI	373-2008	trscam@netscape.net
Vice-President	Dennis Shepan	KB5TPV	522-7466	KB5TPV@zianet.com
Secretary	Jack Lemons	N5PK	526-9428	jack_N5PK@hotmail.com
Treasurer	Charlie Welch	N5CWW	496-3901	cwwelch@usa.net
Board Members	Alex. Burr	K5XY	522-2528	k5xy@arrl.net
	Bob Bennett	AD5LJ	382-0148	rbennett1@comcast.net
	Henry Schotzko	AD5FE	AD5FE	schotzko@comcast.net
	Tim Linn	KD5SSF	521-0486	KD5SSF@arrl.net
	Brad Sacca	KC5SKE	382-4380	shiekyerbouty@msn.com

The newsletter is always looking for articles and notes of interest to the members of the Mesilla Valley Radio Club. Please send them to Alex. F. Burr, K5XY, Editor, MVRC Local Oscillator, 695 Stone Canyon Drive, Las Cruces, NM 88011. Small personal ads from members will also be published. It would be helpful if submissions would be made in a machine readable form. Windows readable disks are welcome. Files can also be sent to the Internet address k5xy@arrl.net. The club maintains a web site at <http://www.zianet.com/mvrc>.

JOIN THE CLUB

To join the Mesilla Valley Radio Club, renew your membership, or to support the repeaters, please print, cut out, and complete the form below. Send it with dues (\$35 single, \$45 family per year, add \$10 to receive the newsletter by US mail instead of e-mail) to: Treasurer, MVRC, Box 1443, Las Cruces, NM 88004.

Name	
------	--

Box or street address	
City	
State	
Zip	
Call	
Class of license	
Phone	
e-mail	
ARRL Member?	

[Return to home page](#)

[Return to Local Oscillator first page](#)