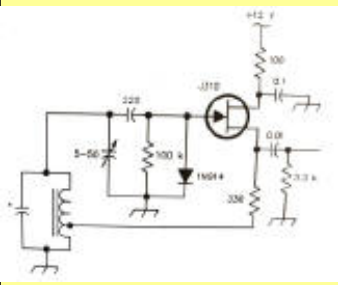
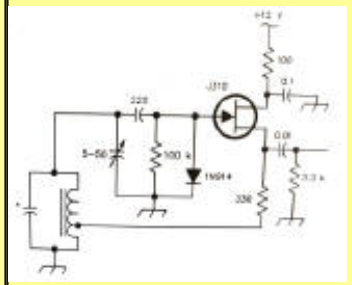


# Local Oscillator



2008

Mesilla Valley Radio Club



February

A [pdf file](#) of this issue is available. It should print fairly easily. If you do not have the free pdf file reader, go to <http://www.adobe.com>

## Coming Events

## Table of Contents

Date	Event	Time
Sun	CW Net 7.142	4:00PM
M - F	6 m FM net 52.540	6:00AM
M - F	round-table 52.525	8:00PM
T, T	Informal Wal-Mart (E)	10:00AM
M, W, F	Informal Wal-Mart (W)	10:00AM
Mon	WTRA Swap net 146.88	8 PM
Wed	Net 146.64	6:45PM
Feb 2	Breakfast - Club House	8 AM
Feb 2	Business meet - Club House	9 AM
Feb 3	Super Bowl Race	
Feb 13	Directors meeting -Club House	
April 27	Bean Feed	

[COMING EVENTS](#)  
[TABLE OF CONTENTS](#)  
[PRESIDENT'S CORNER](#)  
[DUES](#)  
[BACK PAGE](#)



## New Treasurer (N5CWW 2nd from left)

More information at <http://swantenna.com>

**Southwest Antennas & Accessories**

<http://swantenna.com>

The space below is used for acknowledgements and maintaining the site.  
Send comments, suggestions, and requests to [Alex. F. Burr](mailto:aburr@qzxservices.com) or send e-mail to [aburr@qzxservices.com](mailto:aburr@qzxservices.com).  
Technical assistance, net access, design, and maintenance provided by [qzxservices.com](http://qzxservices.com)

## THE ARTICLES FOR THIS MONTH

### PRESIDENT'S CORNER

KD5ZHI

Hello all, our new storage shed is well on the way to being finished. Jack, N5PK, got the building permit and the contractor has started with the demolition and sub-flooring. It should be complete by next meeting if not very close. Once completed, we will have a painting party and will call on members to help.

I want to reminded everyone that the membership dues for this year are due now. Please see our treasure Charlie Welch or send it by mail. We so depend on our membership for the club, so please send it as soon as you can.

The bean feed is coming soon and we will start preparations next board meeting. I have already spoken to one dealer, Southwest Antennas, and he will be here for our event.

We have lost our special events board member and we really need to have it filled. This position is so very important and I have come to realize just how important it is. This person is responsible for cooking or arrangement for our Saturday breakfast, bean feed, and field day cooking. The most important thing is our breakfast, it brings us closer together and builds fellowship. We can exchange thoughts and projects we are working on. So I am asking, as I did at our last meeting, to have someone step up and fill this position.

In closing I wish all well.

[Return to Table of Contents](#)

### DUES

N9OG

Club Dues for 2008 are now being accepted and are delinquent after April 31, 2008. In addition to supporting the various club activities such as Field Day and education classes, dues are necessary to cover the club house expenses such as property taxes, insurance, utilities, and clubhouse maintenance (please see our 2008 Budget for details on these). Dues are \$35, single, and \$45, family, payable to Mesilla Valley Radio Club and can be mailed to: Treasurer, MVRC, P.O. Box 1443, Las Cruces NM 88004.

[Return to Table of Contents](#)

## CLUB INFORMATION

The MVRC Clubhouse is located at the intersection of Wilt and Jefferson in Hacienda Heights. To find the clubhouse, set your destination on your GPS receiver as 32 degrees 22.961 minutes and -106 degrees 41.44 minutes. If you don't own a gps, take the Porter exit on US 70. It is about 5 miles from the I 25 interchange, near the firehouse. Almost immediately south of the south frontage road on the south side of US 70, turn left toward the mountains until you come to Wilt. Turn right. There is a jog in the road, but at 0.35 miles you should come to Jefferson. If you can't see the tower and beam, you shouldn't be driving. The treasurer would be delighted to receive your contribution for landscaping and furnishing.



## Officers

Office	Name	Call	Phone	e-mail
President	Tres Campbell	KD5HZI	373-2008	<a href="mailto:trscam@netscape.net">trscam@netscape.net</a>
Vice-President	Dennis Shepan	KB5TPV	522-7466	<a href="mailto:KB5TPV@zianet.com">KB5TPV@zianet.com</a>
Secretary	Bob Rossow	KE5ISD	522-7445	<a href="mailto:fullback@zianet.com">fullback@zianet.com</a>
Treasurer	Charlie Welch	N5CWW		<a href="mailto:cwwelch@usa.net">cwwelch@usa.net</a>
Board Members	Alex. Burr	K5XY	522-2528	<a href="mailto:k5xy@arrl.net">k5xy@arrl.net</a>
	Bob Bennett	AD5LJ	382-0148	<a href="mailto:rbennett1@comcast.net">rbennett1@comcast.net</a>
	Henry Schotzko	AD5FE	AD5FE	<a href="mailto:schotzko@comcast.net">schotzko@comcast.net</a>
	Tim Linn	KD5SSF	521-0486	<a href="mailto:KD5SSF@arrl.net">KD5SSF@arrl.net</a>
	Brad Sacca	KC5SKE	382-4380	<a href="mailto:shiekyerbouty@msn.com">shiekyerbouty@msn.com</a>

The newsletter is always looking for articles and notes of interest to the members of the Mesilla Valley Radio Club. Please send them to Alex. F. Burr, K5XY, Editor, MVRC Local Oscillator, 695 Stone Canyon Drive, Las Cruces, NM 88011. Small personal ads from members will also be published. It would be helpful if submissions would be made in a machine readable form. Windows readable disks are welcome. Files can also be sent to the Internet address [k5xy@arrl.net](mailto:k5xy@arrl.net). The club maintains a web site at <http://www.zianet.com/mvrc>.

### JOIN THE CLUB

To join the Mesilla Valley Radio Club, renew your membership, or to support the repeaters, please print, cut out, and complete the form below. Send it with dues (\$35 single, \$45 family per year, add \$10 to receive the newsletter by US mail instead of e-mail) to: Treasurer, MVRC, Box 1443, Las Cruces, NM 88004.

Name	
------	--

Box or street address	
City	
State	
Zip	
Call	
Class of license	
Phone	
e-mail	
ARRL Member?	

[Return to home page](#)

[Return to Local Oscillator first page](#)