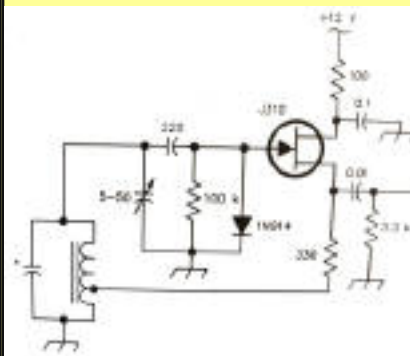


2004

Local Oscillator



July

Mesilla Valley Radio Club

A [pdf file](#) of this issue is available. It should print fairly easily. If you do not have the free pdf file reader, go to <http://www.adobe.com>

Events

Table of Contents

Date	Event	Time
M - F	6 m FM net 52.540	6:00AM
M - F	round-table 52.525	8:00PM
T, T	Breakfast Wal-Mart (E)	10:00AM
M, W, F	Informal - Munson Center	10:00AM
Mon	WTRA Swap net 146.88	8 PM
Wed	Net 146.64	6:45PM
Je 26, 27	Field Day	
July 4	Firecracker Run	
July 10	River Run	
July 17	Burn Lake run	
Aug 7	Breakfast Club House	8:00AM
Aug 7	Business Meet Club House	9:15AM
Aug 9	Social Meeting Golden Corral	6:00PM
Aug 11	1st Wed after 2nd Mon Directors at clubhouse	7:00PM
Sept 4	Alamogordo NM Hamfest	
Oct 31	Marathon	
Nov 11	Baylor Pass Run	

EVENTS

[PRESIDENT'S CORNER](#)

[FIELD DAY 2004](#)

[JULY MEETINGS](#)

[PSL 2, HAMS 0](#)

[CLUB INFORMATION](#)



Cooking Beans 2004

The space below is used for acknowledgements and maintaining the site.

Send comments, suggestions, and requests to [Alex. F. Burr](mailto:aburr@qzxservices.com) or send e-mail to aburr @ qzxservices.com.

Technical assistance, net access, design, and maintenance provided by qzxservices.com

THE ARTICLES FOR THIS MONTH

PRESIDENT'S CORNER

KD5SSF

Field Day is this weekend. Many of our members and friends have been working long hours to make this event a success. I won't even begin to try to name everyone who has contributed to this effort because I don't know about much of the work that people have done. What I do know has left me impressed with your dedication and hard work. Amateurs seem to live by Harry Truman's quote, "It is amazing what you can accomplish if you do not care who gets the credit". We will have four radios, at least as many antennas, several recreational vehicles and a host of volunteers manning the stations around the clock. If you have not been involved in the effort yet, there is still time for you to get in on the action. Come to the parking lot east of the Pan Am Center and see what is happening. Look over the shoulders of the operators and loggers. There may even be an opportunity for you to give one of the operators a break for a while. We will be operating from noon Saturday to noon Sunday. If you want more "hands on" work we will be setting up antennas and other gear around 8 AM Saturday and tearing down after noon on Sunday. To all who are contributing to the success of Field Day, you have my heartfelt thanks.

[Return to Table of Contents](#)

FIELD DAY 2004

Field day is coming.

- Set up starts Saturday at 8AM.
- Operating starts Saturday 12 noon
- Operating ends Sunday noon.
- Satellite contact attempt at Saturday 4 PM and 5:45PM
- Disassembly starts Sunday at noon.

Field Day is an event at which we operate radios at a location remote from electric mains (in the field). We will set up in the gravel parking lot east of the Pan Am Center. Remote does not have to be austere so we will be operating out of several motor homes. There is plenty of fun to go around. Even if you have never been involved in a field day, come and man one of the stations for an hour or so. There

will be experienced Amateurs on hand who will help you get on the air. Insomniacs are advised that we plan to operate throughout the night. This is your chance to join some other nocturnal hams. One of the biggest goals is to generate interest in amateur radio both among hams and those who have not yet discovered the joy of Amateur Radio. Bring along anyone you know of who has any tolerance at all for Amateur Radio. We are still looking for people to work the stations. We will have VHF, HF, CW, HF Phone, and GET ON THE AIR (GOTA) stations. We will allow non-licensed people to make contacts from the GOTA station. We are also looking for someone else to loan us an ICOM 706. If you are willing to allow your ICOM 706 to get an extra workout or wish to man one of the stations for an hour or so, please contact Bob (KD5PPP) at 984-0995 or Cash (KD5SSJ) at 382-1917. The latest schedule of operators is at <http://www.zianet.com/joe/fd2004.htm>.

[Return to Table of Contents](#)

JULY MEETINGS

The MVRC directors decided to not have the regular business meeting on July 3 and also not have the directors meeting on July 14.

[Return to Table of Contents](#)

PSL 2, HAMS 0 WA2NIJ

Thursday, June 10 was the day Sheila Horan's students from Deming were to launch a balloon carrying the payload they had assembled. The payload included a pressure transducer, accelerometer, digital camera, gps and Kenwood HT. The HT sent out an APRS signal every five minutes. Steve Horan, AC5RI, could track the signals in his office.

We gathered at Hatch Middle School for the launch. PSL does launches so often they operate their own helium tanker. The first balloon launched carried a payload for Steve Horan's Capstone Project. It rose at about 1000 ft/minute to 115,000 ft. +/- before bursting. It was tracked by the folks from PSL.

The balloon carrying the students' payload rose to about 60,000 feet before bursting. Then the students from Deming got back on their busses and returned to Las Cruces. That left Sheila, four college students who were working with Sheila on this project, Cash Olsen, KD5SSJ, Marnie, KA2FVO, and myself to go and find the payload.

We hung out at the Dairy Queen until we got the location of the balloon from Steve. It was in an area south of Caballo Lake. The PSL troops chased

their balloon from the east side of the mountains from the Upham exit. We decided to chase our balloon from the west. It took forever to find a way across the river and the Interstate. We tried to cross the road over the dam at Caballo, but it was closed. the people there sent us south. We went through Derrey to the Garfield exit and then took off eastward through the mesquite, going where the gps dictated. At some point along the way, Sheila, in her low slung van, decided she could go no further without damage. Our truck with its higher clearance, was deemed the best option for continuing. Two of the students came along with us.

We followed the gps until we had to quit. The "road" was too narrow. We were only 3 miles from the payload. The students got out and started hiking. They soon returned, saying they would have to climb over a mountain to get to the payload. In the meantime, I thought I had found a spot where I could turn around, and promptly got the truck stuck. The students worked prodigiously, jacking up the truck and putting rocks under the wheels ten times to get it turned around. The water we had carried in the truck was running out.

We drove back to where Sheila had stopped. Cash had called Charlie Mabry, K9AQH and requested help. He brought cold water!!!!

I was anxious to return home, so I took off ahead of the others and promptly got lost. Charlie found me, thus saving my life twice in one day.

Meanwhile, the PSL folks recovered both balloons and payloads.

[Return to Table of Contents](#)

CLUB INFORMATION

The MVRC Clubhouse is located at the intersection of Wilt and Jefferson in Hacienda Heights. To find the clubhouse, set your destination on your GPS receiver as 32 degrees 22.961 minutes and -106 degrees 41.44 minutes. If you don't own a gps, take the Porter exit on US 70. It is about 5 miles from the I 25 interchange, near the firehouse. Almost immediately south of the south frontage road on the south side of US 70, turn left toward the mountains until you come to Wilt. Turn right. There is a jog in the road, but at 0.35 miles you should come to Jefferson. If you can't see the tower and beam, you shouldn't be driving. The treasurer would be delighted to receive your contribution for landscaping and furnishing.



Officers

Office	Name	Call	Phone	e-mail
President	Tim Linn	KD5SSF	521-0486	kd5ssf@arrl.net
Vice-President	Bob Deal	KD5PPP		bob-verna@zianet.com
Secretary	Carleton Talbot	KC5MRM	(915)877-3538	kc5mrm@zianet.com
Treasurer	Charlie Welch	W5TLU	524-3412	cwwelch@usa.net
Board Members	Alex. Burr	K5XY	522-2528	k5xy@arrl.net
	Bob Bennett	AD5LJ	382-0148	rbennett@zianet.com
	Karl Larsen	K5DI	524-3303	k5di@zianet.com
	Cash Olsen	KD5SSJ	382-1917	casholsen@zianet.com
	Joe San Filippo	WZ5R	521-7574	sanfilippo@zianet.com
	Brad Sacca	KC5SKE	382-4380	sheikyerbouty@uswest.net

The newsletter is always looking for articles and notes of interest to the members of the Mesilla Valley Radio Club. Please send them to Alex. F. Burr, K5XY, Editor, MVRC Local Oscillator, 695 Stone Canyon Drive, Las Cruces, NM 88011. Small personal ads from members will also be published. It would be helpful if submissions would be made in a machine readable form. Windows readable disks are welcome. Files can also be sent to the Internet address aburr@aol.com. The club maintains a web site at <http://www.zianet.com/mvrc>.

JOIN THE CLUB

To join the Mesilla Valley Radio Club, renew your membership, or to support the repeaters, please print, cut out, and complete the form below. Send it with dues (\$25 single, \$35 family per year) to: Treasurer, MVRC, Box 1443, Las Cruces, NM 88004.

Name	
Box or street address	
City	
State	
Zip	
Call	
Class of license	
Phone	
e-mail	
ARRL Member?	

[Return to home page](#)