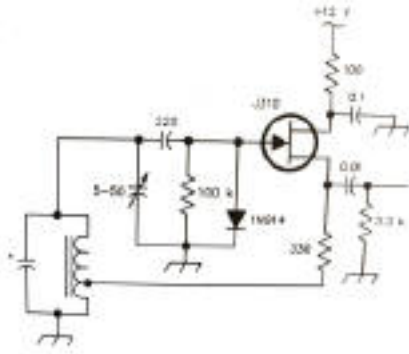
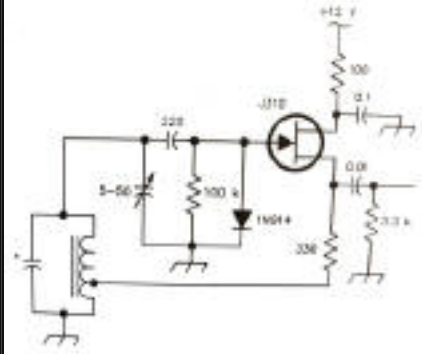


Local Oscillator



2004

Mesilla Valley Radio Club



March

A [pdf file](#) of this issue is available. It should print fairly easily. If you do not have the free pdf file reader, go to <http://www.adobe.com>

Events

Table of Contents

Date	Event	Time
M - F	6 m FM net 52.540	6:00AM
M - F	round-table 52.525	8:00PM
T, T	Breakfast Wal-Mart (E)	10:00AM
M, W, F	Informal - Munson Center	10:00AM
Mon	WTRA Swap net 146.88	8 PM
Wed	Net 146.64	6:45PM
Feb 28	El Paso Hamfest www.qsl.net/w5es/hamfest.htm	AM
March 6	Breakfast Club House	8:00AM
March 6	Business Meet Club House	9:15AM
March 9	Social Meeting New China Buffet	6:00PM
March 11	1st Wed after 2nd Mon Directors at clubhouse	7:00PM
Mar 14	Code test	PM
Mar 25	Bataan Death March	AM
Apr 03	Run Old Mesilla	AM
Apr 16-18	General Class Club House	

EVENTS

[PRESIDENT'S CORNER](#)

[BREAKFAST](#)

[SUPER SUNDAY RACE](#)

[SOCIAL DINNER](#)

[CW CLASS INFORMATION](#)

[ELMER SESSION](#)

[DEARHOLT TRAIL RUN](#)

[BEAN FEED](#)

[THE CLOUDCROFT VE TRIPS](#)

[UNCLASSIFIED ADS](#)

[CLUB INFORMATION](#)

Apr 18	Triathlon	AM
Apr 25	Bean Feed Club House	7:00AM
May 1,2 May 8,9	Extra Class Club House	8:00AM
	See Classes for details	



K5DI Confers with Emergency Personnel

The space below is used for acknowledgements and maintaining the site.

Send comments, suggestions, and requests to [Alex. F. Burr](mailto:aburr@qzxservices.com) or send e-mail to [aburr @ qzxservices.com](mailto:aburr@qzxservices.com).

Technical assistance, net access, design, and maintenance provided by qzxservices.com

THE ARTICLES FOR THIS MONTH

PRESIDENT'S CORNER

KD4SSJ

I have recently been intrigued with radio direction finding. I find it fascinating that one can determine the direction to a transmitter using antennas, phase shifts, and signal strengths. We also need to think about direction finding in another sense. What direction do we want to find our club going a year from now? My idea is to continue to be a group of people pursuing diverse interests, united by our love of Amateur Radio. I want to have our club meetings be times that members tell each other of the fun they are having in their radio-related hobby. There may never be a majority of the club members involved in your favorite facet of Amateur Radio, but by sharing your enthusiasm, we all benefit and the club is a much more fun place to be. If you have a particular aspect of Amateur Radio that you enjoy and would like to tell the other members how much fun you have doing it, contact me or Bob Deal and we will find a time for you to tell the rest of us about it.

[Return to Table of Contents](#)

BREAKFAST

KD5SSJ

Join us for breakfast at 8:00am on March 6, 2004. The breakfast has been very successful over the last year, Let's keep it going and growing. I try to plan fairly close on the provisions so that we can have the breakfast, breaking even or making a small profit.

Last month I bought three and a half dozen eggs, six pounds of bacon, biscuits, two gallons of orange juice, etc. Bob Deal has been real good about bringing in some extra meat, last time he brought in a box of polish sausages, which got high complements. The reason he contributes the extra meat is that there are so many who are on the Atkin's diet.

Last month I ran out of eggs, so I'll bring in another dozen or so. Things like the extra meat can go back into the freezer but I try not to keep eggs, milk, and juice over from month to month.

Last month I got some really great help from Dorothy, K0SWK and Tressa, KD5ZHD. I have a couple of volunteers for this month. A few guys like Bob, AD5LJ, and Tim, KD5SSF, have stayed after the meetings to help so many times I've lost track. Their help is always appreciated.

[Return to Table of Contents](#)

SUPER SUNDAY RACE

K5DI

On February 1 2004 at 9:30 the members of the Club began arriving to support the Super Sunday 5 and 10 KM races. At this time my thermometer in my car said it was 45 degrees and a good stiff wind was out of the west, making the wind chill temperature about minus 5 degrees. All positions were assigned and we had the whole 10 KM under view the whole race.

Henry AD5FE was at the first corner and George KD5OHA was between Henry and Dennis who was at the 5 KM turn around point. Steve WM5Z and Val KD5ZGY were at the next turn onto Tellbrook and they needed their 4 wheel drive to get there. Next was John WK5C on the hill where he could see everybody. This also required 4 wheel drive. Brad KC5SKE was next and he was situated so he could see John and Joe KI5FJ who was at the 10 KM Turn Around. Karl K5DI was at the start/finish line and stayed huddled in his car.

K5DI had his Ham Radio and a hand held that contacted the NMSU EMS people if needed. This was very nice. There were no injuries and we all got shirts of the size requested. Everyone cleared out for home and a warm cup of coffee as soon as possible. It was another race well covered.

[Return to Table of Contents](#)

SOCIAL DINNER

KD5SSJ

The social dinner is at 6:00pm on March 8, 2004 at the New China Super Buffet, 850 North Telshor Blvd. Suite K, just north of the Spruce underpass. The social dinner this month comes on the heels of the Breakfast / Business meeting, because the second Monday in February and March this (leap) year immediately follows the first Saturday. Last month only a few attended but I know that several of us were thinking that it shouldn't come so soon after the business meeting. Come and enjoy food and drink, there's usually a pretty good group.

[Return to Table of Contents](#)

CW CLASS INFORMATION

K5DI

If you are planning to get a General Class ticket you need to demonstrate that you can copy the Morse Code at a rate of 5 Words per Minute. There will be a CW Class offered along with the Technician, General and Extra Class classes.

You can get the instructions and the software that runs well on windows computers from my web page whenever you want it. To reach this web

page point your browser at:

<http://www.zianet.com/k5di/>

and click on CW to get to that page. There are 2 papers and the Koch software to download. You can get started right now if you want to!

For other information please contact Karl Larsen at 524-3303.

[Return to Table of Contents](#)

ELMER SESSION

KD5SSJ

Last fall we tried something new, we called it the Elmer session, and it was a success. It was scheduled for March 20 to follow the Technician Class in February, but with everybody's permission, I'd like to combine it with the Bean Feed. We have a busy schedule of classes in March.

[Return to Table of Contents](#)

DEARHOLT TRAIL RUN

K5DI

On February 14, 2004 at 8:00 AM it was 21 degrees at the start/finish line for this race. The frigid temperature kept many runners from coming out. The ladies who passed out the numbers and registered them were very cold!

We Hams were lucky. We could spend most of the time in our warm cars. This was the first race for Charlie Mabry, KE5AAE and he enjoyed it even though it was cold. Alex, K5XY was the only walker in this race and the photographer. Steve, AC5RI, Jack, N5PK, Dennis, KB5TPV, John, WK5C, Henry, AD5FE, Karl, WF5A, Rodney, WK5I, George, KD5OHA, Joe, WZ5R, Dale, K4BHL, and Karl, K5DI were the radio stations that watched the runners from sites on the runner's path. The Fire Department came out with a truck and we discussed how we would get an injured runner to the truck, since it was not capable of driving the dirt roads.

It was fun and this was the first time this course has been used. There are a lot of new homes and roads being put up in this area. In three years there will be more homes and all the roads and some jogging paths will be finished. So this will become a much used course.

[Return to Table of Contents](#)

BEAN FEED

KD5SSJ

Speaking of the Bean Feed, our annual swap meet and fundraiser. This year it falls on April 24 (always the last Sunday of April). Last year we made well over \$2000 which has helped to keep membership dues from rising.

Bob, AD5LJ, and I picked up two pickup truck loads of donations today. There were some WW II vintage transmitters / receivers, and lots of power supplies (heavy duty), four small military oscilloscopes, and some miscellaneous stuff. If you have some electronics / ham gear that you have gotten tired of or just can't find a place to keep it (think of how many months you've paid the rent on that storage building), consider tailgating at the Bean Feed or donating it to the club.

Dorothy Figgins, K0SWK, has volunteered to do the talk in. We need help with lots of aspects of the preparations to make the Bean Feed a success again this year, so be thinking of how you'd like to help and get in touch with me on the air or at 382-1917.

[Return to Table of Contents](#)

THE CLOUDCROFT VE TRIPS

K5DI

Reg Duncan, W5UWY moved to James Canyon near Cloudcroft several years ago and decided to get everyone who lives up there a Ham Ticket. He is helped a lot by Howard and Grady.

Reg is using the same basic method to teach the students that we use here. He is using the old video with the new booklets done by Dr. Steve

Horan AC5RI. I have the booklets in a "pdf" form on a cd-rom that I take to Instomtic Printing in the old downtown where the worker/owner puts the cd-rom into his computer and out comes 15 booklets, that they bind with the black plastic spiral stuff. Grady comes to Las Cruces often on business and he gets the booklets up to Cloudcroft.

The VE session was Saturday February 2 2004, and there was a Club meeting. So all the VE's came to the club meeting and we left from the Clubhouse, leaving all the cars there but mine. I now drive a 4 wheel drive Dodge Durango that has seating for 6 adults.

We drove through a little snow and had no ice I was happy to find. There were high piles of snow along the road and we passed several groups of inner tube snow fun groups that were obviously from Las Cruces and El Paso based on license plates and high school stickers.

We got to the James Canyon Fire station and the ladies had brought some pizza and sweets for lunch for the VE team, students and teachers. Then we got set up and I introduced the team that was Loren Otto, N7LO, Henry Schotzko, AD5FE, Joe Ostrowski, KI5FJ, and myself. We had ten students so there was a lot of paperwork. One young lady only missed making it by one question so I asked her to take another test, and she passed.

So as we have come to expect, good teachers using the ARRL video's and Steve's booklet result in 100% of the students passing the test. We had a pleasant trip home and got home about 3:00 PM.

[Return to Table of Contents](#)

UNCLASSIFIED ADS

WANTED: The club needs a small unit that can receive on the 70 cm band. The unit could be either a hand-held or a scanner. If you have such equipment that you would like to donate to MVRC, please contact Tim Linn 521-0486 or kd5ssf@arrl.net.

[Return to Table of Contents](#)

CLUB INFORMATION

The MVRC Clubhouse is located at the intersection of Wilt and Jefferson in Hacienda Heights. The treasurer would be delighted to receive your contribution for landscaping and furnishing. To find the clubhouse, set your destination on your GPS receiver as 32 degrees 22.961 minutes and -106 degrees 41.44 minutes. If you don't own a gps, drive out North Main towards Alamogordo. At about 5 miles from the I 25 interchange, near the firehouse, exit at Porter. Almost immediately turn left and continue toward the mountains until you come to Wilt. Turn right. There is a jog in the road, but at 0.35 miles you should come to Jefferson. If you can't see the tower and beam, you shouldn't be driving.



Officers

Office	Name	Call	Phone	e-mail
President	Tim Linn	KD5SSF	521-0486	kd5ssf@arrl.net
Vice-President	Bob Deal	KD5PPP		bob-verna@zianet.com
Secretary	Carleton Talbot	KC5MRM	(915)877-3538	kc5mrm@zianet.com
Treasurer	Charlie Welch	W5TLU	524-3412	cwwelch@usa.net
Board Members	Alex. Burr	K5XY	522-2528	k5xy@arrl.net
	Bob Bennett	AD5LJ	382-0148	rbennett@zianet.com
	Karl Larsen	K5DI	524-3303	k5di@zianet.com
	Cash Olsen	KD5SSJ	382-1917	casholsen@zianet.com
	Joe San Filippo	WZ5R	521-7574	sanfilippo@zianet.com
	Brad Sacca	KC5SKE	382-4380	sheikyerbouty@uswest.net

The newsletter is always looking for articles and notes of interest to the members of the Mesilla Valley Radio Club. Please send them to Alex. F. Burr, K5XY, Editor, MVRC Local Oscillator, 695 Stone Canyon Drive, Las Cruces, NM 88011. Small personal ads from members will also be published. It would be helpful if submissions would be made in a machine readable form. Windows readable disks are welcome. Files can also be sent to the Internet address aburr@aol.com. The club maintains a web site at <http://www.zianet.com/mvrc>.

JOIN THE CLUB

To join the Mesilla Valley Radio Club, renew your membership, or to support the repeaters, please print, cut out, and complete the form below. Send it with dues (\$25 single, \$35 family per year) to: Treasurer, MVRC, Box 1443, Las Cruces, NM 88004.

Name	
Box or street address	
City	
State	
Zip	
Call	
Class of license	
Phone	
e-mail	
ARRL Member?	

[Return to home page](#)